

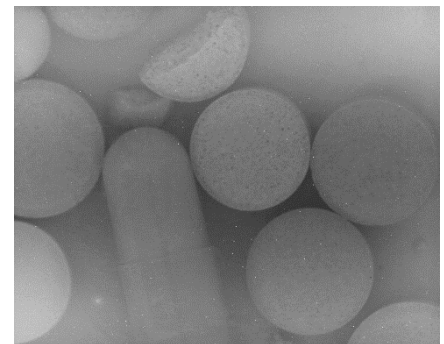
## BV-C2901 Air Cooling SWIR VGA Camera

The BV-C2901 uses a VGA InGaAs sensor with a built-in Peltier having the sensitivity from 950nm to 1700nm. Additionally, it employs an Air Cooling system and maintains the sensor temperature at  $-10^{\circ}\text{C}$  to suppress the increase of the dark current. As the result, it achieves high signal to noise ratio with two seconds exposure time.



### Key Features

- ◆ High signal to noise ration under 2 seconds exposure time  
By Peltier (built-in sensor) and using additional air cooling system maintains the sensor temperature at  $-10^{\circ}\text{C}$
- ◆ Employs InGaAs VGA sensor with pixel size of  $20\mu\text{m}$
- ◆ 62 fps of the maximum frame rate
- ◆ 8/10/12/14bit for the video output
- ◆ C mount of 1-inch or larger format
- ◆ GigE or CameraLink interface



**$-10^{\circ}\text{C}/2$  seconds exposure time**

### Option Unit

#### BVA-AC06P



#### Power supply unit

This is a power supply unit for BV-C2900 series.

Input: 100V~240V, 50Hz/60Hz

Output: DC12V $\pm$ 3%, 1A

Weight: 120g

#### C mount lens



SWIR C mount lens is available from Bluevision. 20mm, 24mm, 28mm, 35mm, 50mm and 105mm are available for choice.

Image size: 15mm(H)

Iris range: F2.8 ~F22

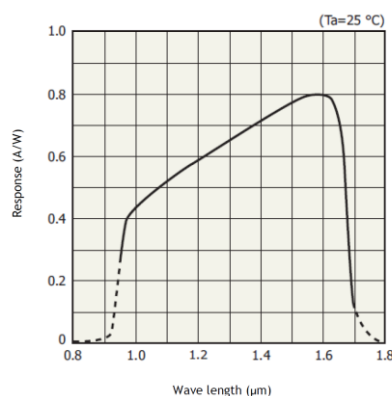
## Preliminary specifications

Item	BV-C2901-GE	BV-C2901-CL
Image sensor	G12242-0909W 2 step electronic cooling (Peltier) InGaAs sensor Effective pixel: 640(H) x 512(V)、Pixel size: 20 $\mu$ m x 20 $\mu$ m Effective Image area: 12.8mm x 10.24mm	
Cooling	Combination of Peltier and Air Cooling keep -10 $^{\circ}$ C (Ta=25 $^{\circ}$ C) : Default = -10 $^{\circ}$ C	
Wave bandwidth	950nm ~1700nm	
Sensor conversion efficiency	1 $\mu$ V/e-	
Synchronization	Internal / External trigger	
Pixel clock	25MHz Data rate: 6.25MHz(4 port readout)	
Frame rate	At Exposure time: 1 clock (1 $\mu$ sec) : 62fps / At Exposure time: 16msec: 31fps	
Video S/N	55dB	
Video output	8/ 10/ 12/ 14 bit	
Electronic shutter	Global shutter	
Gain	0dB ~ +30dB	
Black level	0LSB ~ 127LSB (at 10-bit)	
Blemish compensation	Built in compensation circuit	
Shading compensation	Flat shading compensation: ON/OFF	
PRNU	Pixel luminance level compensation	
DSNU	Pixel dark level compensation (Lens cap on)	
Communication interface	Gigabit Ethernet (1000BASE-T) SDK-TransFlyer (made by Aval Data)	CameraLink (Base configuration)
Lens mount	C mount (1-inch or larger format)	
Regulation	RoHS, CE	
Power supply	DC +12V $\pm$ 10%, 7W	
Operating temperature /Humidity	-5 $^{\circ}$ C ~ +45 $^{\circ}$ C/ 20 ~ 80% (Non-condensing)	
Dimensions (WxHxD)	95(W) x 95(H) x 129(D) mm (excluding protrusion)	
Weight	1090 g	1100 g

## Rear panel



## Quantum efficiency



- Specifications are subject to change without prior notice
- This product is in the scope of Export Trade Control Order and requires export license.